

JANUARY  
2026

MAC DESIGN GROUP

# PRODUCT CATALOGUE

Discover the MAC difference  
VI



PRICING CATALOGUE  
**TABLE OF CONTENTS**

<b>OUR BRANDS</b>	3
<b>MEASURING GUIDE</b>	4
<b>HEADING OPTIONS</b>	8
<b>MAC CURTAINS</b>	
IMPORTANT INFORMATION FOR YOU & YOUR CUSTOMERS	14
<b>MAC MADE</b>	
OUR RANGE	16
FABRIC GROUPS	18
<b>MAC MAKING</b>	
HOW WE SUPPORT YOU	21
<b>MAC TRACKS</b>	
OUR RANGE	24
OPERATION GUIDE	26
ADDITIONS & SPECIAL REQUIREMENTS	29
AUTOMATION	31
PRODUCT SPECIFICATION	33

THE MAC RANGE

# OUR BRANDS



MAC Made is our bespoke complete curtain and track solution, delivering high-quality, Australian-made curtains tailored to your exact specifications. Combining expert craftsmanship with premium fabrics and precision hardware, MAC Made offers retailers and designers a seamless all inclusive product of beautifully finished, made-to-measure curtains.

---



MAC Making is our dedicated contract manufacturing service, supporting brands, retailers and industry partners with scalable, reliable production tailored to their unique requirements. With advanced facilities and expert workmanship, we bring your designs to life with consistency, efficiency and uncompromising quality.

---



MAC Tracks provides precision-engineered curtain tracking solutions designed to support performance, durability and seamless integration with your soft furnishings. Offering custom configurations, advanced motorisation options and high-quality hardware, MAC Tracks ensures smooth operation and a refined finish for every window application.

A modern living room with a wood-burning stove, a large window, and a beanbag chair. The room is dimly lit, with light coming from the window on the right. The stove is in the center, and the beanbag chair is on the right. The window on the left shows a snowy landscape with bare trees.

QUICK GUIDES

## HOW TO MEASURE FOR CURTAINS

## MAC CURTAINS

### INFORMATION FOR MEASURING

#### TRACK & MOUNTING POSITION

Consider where the track or rod will be installed — ceiling-mounted, face-fix or within the recess — as this will define the overall drop, coverage and visual height of your curtains.

#### CURTAIN & DROP PROPORTIONS

Ceiling height and desired finish (puddle, just-touching or floating) play a key role in achieving the right balance and aesthetic within the space.

#### FULLNESS & STACK BACK ALLOWANCE

Allow for sufficient curtain fullness and stack back space to ensure smooth operation and proper light control when curtains are fully open or closed.

#### WINDOW CONFIGURATION & PLACEMENT

Take note of whether the curtains will sit inside the recess or extend beyond it, as this impacts coverage, insulation, and the overall flow of the window treatment.

### A QUICK GUIDE TO MEASUREMENTS

#### STEP 1

#### CURTAIN TRACK LOCATION

DETERMINE CURTAIN TRACK MOUNTING POSITION

##### TOP FIX

Mounting brackets direct to the ceiling.

##### FACE FIX

Mounting brackets direct to the wall.

Common Options:

- 150 mm above the window's top architrave.

Please consider when choosing face fix that the positioning above the window, is consistent with other windows that may be located in the same space.





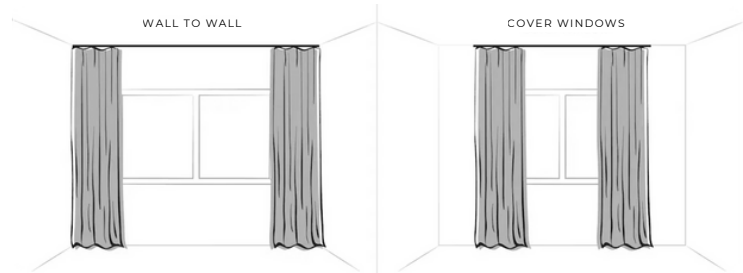
## STEP 2

### CURTAIN SPAN

#### CHOOSE YOUR WINDOW COVERAGE

150mm either side of window's architrave or wall to wall finish.

Please consider when measuring, that your curtains when open, will approximately stack back 20-25% of the total width. If curtains require to stack back off the windows, allow for the additional in the overall measurement.



## STEP 3

### MEASURING

#### TOP FIX

- Measure from ceiling to finished floor.
- Measure width from left to right, based on the window coverage.

#### FACE FIX

- Measure drop from curtain track mounting position height to finished floor.
- Measure width from left to right, based on the window coverage.

Please consider when measuring the drop, that the measurement provided includes the desired curtain finish on the floor.


#### Common options:

- 10mm above finished floor (deducted 10mm from drop measurement).
- Kissing (just touching finished floor – no deductions required from drop measurement).
- Puddling (10-20mm on the floor, ideal for 100% linen curtains, add additional length to drop measurement).

\*\*\*Please note that the measurements should be taken in three (3) different points; left side, middle & right side





A dark, moody photograph of a kitchen. In the foreground, a dark countertop holds a sink with a modern, curved faucet. To the right of the sink, there is a pitcher, a bowl, and a cup. In the background, a window with white frames is visible, and to the right, a window with white curtains is partially open, letting in light. The overall atmosphere is dim and minimalist.

QUICK GUIDES

**HEADING OPTIONS**

## MAC CURTAINS

### DETERMINING YOUR HEADING

#### OUR PROCESS

For both MAC Made & MAC Making order forms, you will need to stipulate the curtain width and drop.

When supplying MAC Making measurements, ensuring this is the required finished width and drop of the curtain. The final measurements should be once all allowances/ deductions have been applied; these will include items like track deductions, curtain puddling, hook type, installation requirements or even heading height that may impact the finished product measurements.

With the MAC Making order, it is a requirement of the customer to include the fullness for the curtains, while then ensuring the meterage amount of fabric required has been ordered with the fabric house directly. If there are additional requirements like, returns, overlap/ underlap arms, it will need to be considered when ordering fabric, and stipulating final curtain widths, so when the final product is produced, it suits requirements on order form.

Our MAC Made program, will manage fabric requirements, deductions and/or allowances, plus any add-ons like returns and overlap/ underlap arms will be considered pre-production. The standard hook selection is a 2072 hook, that allows the curtain to sit under the track, without exposing any of the tracks runners/ carriers.

The measurements supplied on the MAC Made order form does not need to include the additional measurements of these items, however it is required to be noted on the order form, so the MAC team is able to manage and apply the deductions/ allowances to suit.

### CURTAIN FULLNESS

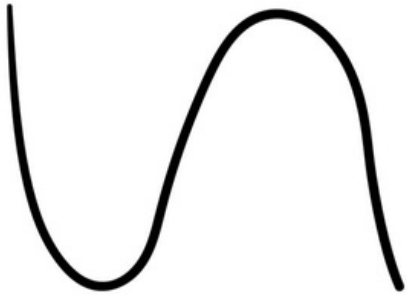
#### HOW TO DETERMINE FULLNESS

When it comes to fullness the below table is what MAC considers the best fullness allowance when it comes to each style of Pinch & Inverted Pleats:

PINCH STYLE	FULLNESS AMOUNT
Single Pinch	2.1 x
Double Pinch	2.3 x
Triple Pinch	2.5 x
Inverted Pleat	2.3 x
Euro Pleat	2.3 x

*Note: Our production team does allow for looseness to avoid the natural bounce back when wanting your curtain closed.*





AVAILABLE HEADINGS

## S-FOLD CURTAINS

*Available in a 25mm heading size with a choice of white, black, or clear tape.*

The S-Fold style curtain gives a contemporary look that has been growing in popularity over recent times. Utilising a smaller heading of 25mm it provides the curtain with a narrow and sleek top construction.

This also benefits the application by achieving higher drop sizes in continuous fabrics which will avoid joins in the curtain.

SUITABLE WITH THE FOLLOWING MAC TRACKS:

- ✓ MAC Standard
- ✓ MAC D10
- ✓ MAC D25
- ✓ MAC D38
- ✓ Somfy Glydea



AVAILABLE HEADINGS

## WAVE FOLD CURTAINS

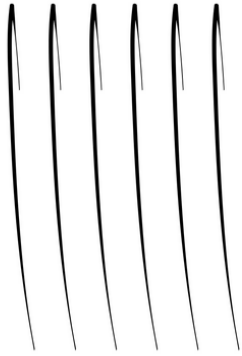
*Available in 75mm clear heading tape only.*

This stylish heading type gives a soft ripple effect similar to S-Fold. While still providing a contemporary look, it will also provide a thicker heading aesthetically.

The difference between S-Fold and Wave Fold styles is the increased heading size of 75mm.

SUITABLE WITH THE FOLLOWING MAC TRACKS:

- ✓ MAC Standard
- ✓ MAC D10
- ✓ MAC D25
- ✓ MAC D38
- ✓ Somfy Glydea



AVAILABLE HEADINGS

# PENCIL PLEAT CURTAINS

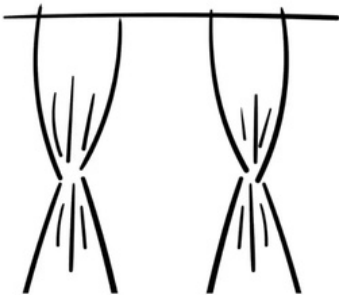
*Available in 75mm white or clear tape.*

Pencil Pleat curtains feature folds gathered closely together to resemble a neat row of pencils.

This is a great solution when the application has reduced space to operate in or to operate as a dual curtain to reduce projection.

SUITABLE WITH THE FOLLOWING MAC TRACKS:

- ✓ MAC Standard
- ✓ MAC Streamline
- ✓ MAC D10
- ✓ MAC D25
- ✓ MAC D38
- ✓ Somfy Glydea



AVAILABLE HEADINGS

# PINCH PLEAT CURTAINS

*Available in 75mm white or clear tape.*

Tailored deep pleates that form the entire length of the curtain. They are highly decorative and suit all interiors from Chic to Formal spaces. This option has additional styles from single, double to triple pinch pleat. Pinch pleat is also a great option when the end user doesn't want the track to be exposed but utilizing a different size hook to lift the curtain up.

SUITABLE WITH THE FOLLOWING MAC TRACKS:

- ✓ MAC Standard
- ✓ MAC D10
- ✓ MAC 15
- ✓ MAC D25
- ✓ MAC D38
- ✓ Somfy Glydea



THE MAC RANGE

# CURTAINS



## IMPORTANT INFORMATION FOR YOU & YOUR CUSTOMERS

### CURTAIN MOVEMENT

Please be aware that all the fabrics we use are woven textiles; the weave may have a tendency to move due to such environmental factors such as gravity or temperature.

Some compositions move more than others and as an industry standard, 3% movement across the curtain is acceptable.

### FAULTS & FLAWS

MAC will not be liable for fabric issues such as flaws, inconsistencies, dyelot and other issues on customer supplied fabrics.

### CREASING

At MAC we press our curtains and have them leaving here looking perfect, but as you are aware the curtains have to make the journey to you and then on to your customer. During this time the curtains will be manually handled by multiple people and when transported must be placed and arranged with the utmost care as these curtains may get creased in their journey to their final destination.

We recommend all curtains once fitted should be dressed correctly by the fitter and also steamed to remove any creases that may have occurred in transit from MAC to you.

### LINEN FABRIC SELECTIONS

As linen is a natural fibre it can be volatile and impacted by the natural elements of its environment; including sunlight, heating, cooling, window glass treatment, etc.

When selling linen, it is important that the end user is aware that the likelihood of the fabric moving is extremely high. The expected movement falls in line with the industry standard of 3% across the curtain.

Our recommendation is that linen curtains should be sold puddling/touching the floor.

### TRACK COLOUR OPTIONS

Choose from a range of premium track colour finishes to perfectly complement your curtains and overall interior scheme. From subtle neutrals to contemporary tones, MAC makes it easy to achieve a cohesive, considered look. Explore the full range in our MAC Tracks section.

For custom powder coating please enquire with your Account Manager as this will be priced upon application.

### BAY & UNUSUAL WINDOWS

Bay and unconventional window shapes are no challenge for MAC. Our custom track solutions are designed to accommodate curved, angled and non-standard layouts with precision and ease.

Refer to our Operation & Bending Guide for details on configuration and performance.

# MAC *made*

THE MAC MADE RANGE

## A CUSTOM CURTAIN SOLUTION

Our MAC Made service is designed to eliminate the stress and confusion for our retailers when ordering curtains.

Easy to follow price grids.

Curtains, tracking, fabric all in one!



## HOW WE SUPPORT YOU

**WE PRODUCE HIGH-QUALITY AUSTRALIAN-MADE CURTAINS AND TRACKS THAT REDEFINE AND ENHANCE THE AESTHETIC OF INTERIOR SPACES.**

Our curtain offering is built around flexibility and precision. Retailers can specify with confidence, knowing each order is supported by clear pricing structures, streamlined ordering, and a manufacturing process designed to deliver repeatable results at scale.

# MAC *made*



### CONCEPT

Your client engages you with their ideal design concept.



### MEASURE

You measure and confirm the product specifications you need.



You engage our team of experts to complete your design.



### BUILD

We'll expertly craft your curtains, from fabrics to finishes.



### DELIVER

We'll deliver your MAC Made curtains direct to your business ready for you to install for your customer.

Our MAC Made Program is a made-to-measure service designed to eliminate the stress and confusion when ordering curtains for our retail partners. This ensures perfect delivery of your order, every time.

Exceptional quality and customer satisfaction are the foundations of our company and are the driving force behind all decisions we make. We pride ourselves on creating high-quality Australian-made curtains for all Australian spaces.





#### OUR CURTAIN RANGE

### **SOFT AND SILKY SHEER CURTAINS**

Sheer curtains are a beautiful yet practical addition to any space. Whether you are looking to soften a room or update your decor, we have the solution for you.

By perfectly framing your windows, sheers will complement the look and feel of any room with their timeless and stylish finish.

Sheer curtains allow natural light, creating a soft and welcoming feel whilst adding a level of privacy.

We offer a unique range of premium fabrics, in a number of textures and colours.

#### OUR CURTAIN RANGE

### **BOLD AND DYNAMIC BLOCKOUT CURTAINS**

Crafted with high-quality materials, our blackout fabrics provide exceptional light-blocking properties, ensuring a restful and serene environment while adding a stylish touch to any kind of space.

These curtains act as a barrier, helping to regulate room temperature, reduce energy costs and minimise acoustics, also creating a comfortable living space while being environmentally conscious.

With an added sense of privacy, these curtains are the ideal tool for your personalised interior sanctuary.

Choose from a wide array of styles and colours to complement decor or make a bold statement.



MAC MADE

## FABRIC GROUPS

To simplify pricing and streamline the selection process, MAC Made fabrics have been organised into dedicated fabric groups. Each group reflects a specific tier of fabric quality and performance, with corresponding pricing outlined on the following pages.

### GROUP 1

SUPPLIER	FABRIC NAME	WEIGHTED BASE	FABRIC WIDTH
Nettex	Bali	Y	330cm
Nettex	Cannes	Y	320cm
Nettex	Vevey	Y	320cm
Nettex	Euphoric (Blockout)	N	300cm
Nettex	Mykonos	Y	330cm
Warwick	Montenegro	Y	320cm
Warwick	Corfu	Y	300cm
Warwick	Luna (Dimout)	N	300cm
Warwick	Twilight (Blockout)	N	300cm
Warwick	Taormina	Y	320cm
Hoad	Astra	Y	315cm
Basford Brands	Simplicity (Blockout)	N	320cm
Basford Brands	Odin	Y	320cm
Basford Brands	Supremo	Y	330cm
Basford Brands	Libretto	Y	320cm
Basford Brands	Harris (Blockout)	N	290cm

### GROUP 2

SUPPLIER	FABRIC NAME	WEIGHTED BASE	FABRIC WIDTH
Warwick	Sicily	Y	330cm
Warwick	Lavish (Blockout)	N	300cm
Warwick	Paros	Y	300cm
Nettex	Homestead	Y	360cm
Nettex	Altitude	Y	330cm
Hoad	Cloud	N	320cm
Mokum	Solarline (Silicone Blockout)	N	300cm
Basford Brands	Blythe (Linen Blend)	Y	340cm
Basford Brands	Weylands (Blockout)	N	300cm
Zepel	Graceful	Y	330cm
Zepel	Rhyme	N	302cm
MAC	Luna	Y	320cm

**GROUP 3**

SUPPLIER	FABRIC NAME	WEIGHTED BASE	FABRIC WIDTH
Warwick	Belmore (Blockout)	N	300cm
Warwick	Burano	Y	315cm
Warwick	Gambier (Blockout)	N	300cm
Warwick	Noble (Blockout)	N	300cm
Warwick	Holland (Blockout)	N	300cm
Nettex	Galaxy (Blockout)	N	300cm
Zepel	Allusion	N	300cm
Zepel	Draper	N	300cm
Zepel	Audiance	N	315cm
James Dunlop	Galaxy (Blockout)	N	300cm
Basford Brands	Pilbara	Y	300cm
Basford Brands	Chesterfield (Blockout)	N	300cm

**GROUP 4**

SUPPLIER	FABRIC NAME	WEIGHTED BASE	FABRIC WIDTH
Warwick	Calais	Y	320cm
James Dunlop	Antipodes	Y	320cm
James Dunlop	Cavalier	N	300cm
James Dunlop	Beauvoir	N	304cm
James Dunlop	Reverie	N	320cm
Zepel	Retreat (Blockout)	N	300cm
Zepel	Motion	N	310cm
Charles Parsons	Athina	N	280cm

**GROUP 5**

SUPPLIER	FABRIC NAME	WEIGHTED BASE	FABRIC WIDTH
James Dunlop	Laconia Air	N	300cm
James Dunlop	Kyoto	N	290cm
James Dunlop	Kanji	N	300cm
James Dunlop	Statement	N	308cm
Warwick	Aesop	N	330cm
Warwick	Portofino	N	310cm
Mokum	Kanso	N	300cm
Zepel	Sight	N	300cm

**LINING**

SUPPLIER	FABRIC NAME	WEIGHTED BASE	FABRIC WIDTH
MAC Lining	4 pass - Thermoguard	N	320cm
Nettex	Euphoric	N	300cm
Basford Brands	Simplicity	N	320cm



**MAC**  
M A K I N G

THE MAC MAKING RANGE

**EXPERT CONTRACT MANUFACTURING**

From cutting to sewing and finishing, we provide high-quality production that you can trust from our Australian facility — allowing you to scale with confidence and consistency.

HOW WE SUPPORT YOU

**DESIGNED TO SUPPORT  
FABRICATORS, RETAILERS AND  
INDUSTRY PROFESSIONALS**

Designed for trade partners, MAC Making provides end-to-end contract manufacturing backed by modern facilities and experienced makers. From small runs to large-scale orders, we offer dependable production with full quality control.



**SUBMIT**

You submit your order through our easy online ordering portal.



**DELIVER**

Your fabrics are delivered to our workroom.



M A K I N G

We manufacture your curtains to your specifications.



**PRODUCT CHECKS**

Your curtains will go through a stringent product guarantee.



**HAPPY CLIENTS**

We'll deliver your MAC Making curtains direct to your business ready for you to install for your clients.

Our MAC Making program creates bespoke curtains with fabric ranges selected and procured by the retailer through fabric houses and delivered directly to our workroom. Retailer provides: fabric, making details and accessories.

MAC takes cares of the rest!



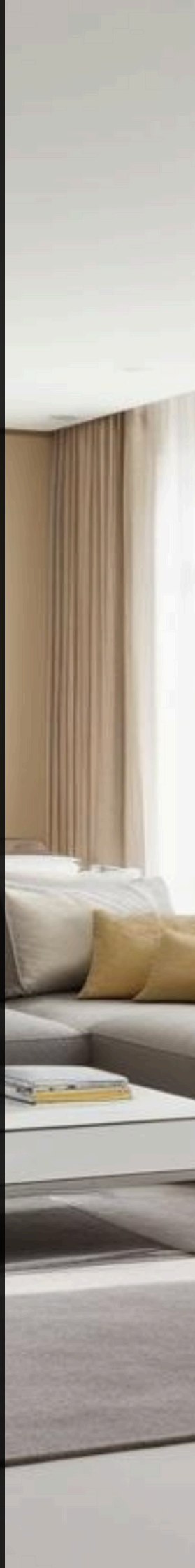


# MAC *Tracks*

THE MAC TRACKS RANGE

## TOP TIER CUSTOM MADE CURTAIN TRACKS

Manufactured to exacting standards, our track systems provide smooth operation, structural reliability and seamless integration with both manual and motorised curtain solutions.



## HOW WE SUPPORT YOU

### PRECISION ENGINEERED TRACKING SOLUTIONS FOR TRADE APPLICATIONS

We offer a comprehensive range of track options, components and custom configurations to support standard windows, bays and complex architectural layouts. With in-house bending, joining and finishing capabilities, MAC Tracks are built to adapt — not limit — your projects.



Our tracks are fully compatible with leading motorisation and home automation systems, ensuring retailers can confidently specify solutions that meet modern performance and control expectations.





## MAC TRACKS

### **GENERAL TRACK INFORMATION**

MAC Tracks will include the extrusion, runner/glide type, end caps, flick stick carrier and where specified the curtain tape, curtain hooks or pendants will be supplied directly to the specified curtain workroom.

### **OPERATION**

All tracks are priced as manual operation only. Any variation to this will be at an additional cost; refer to the Operation Guide for alternative options.

### **FLICK STICKS**

Flick sticks will be supplied based on the opening or the number of curtains operating on one length of track; refer to the Flick Stick Guide for the quantities suited to each curtain opening.

FORM & FUNCTION

**OPERATION GUIDE**

All tracks in the Made to Measure pricing below are made to be operated manually.

When determining the opening of your curtains per curtain track, ensure the quantity requirement is allowed for.

Please refer to the Flick Stick Guide below.

**FLICK STICK RANGE**

COLOUR	SIZE
CLEAR, BLACK, WHITE, MATTE SATIN	MAC FLICK STICK 1M
CLEAR, BLACK, WHITE, MATTE SATIN	MAC FLICK STICK 1.25M
CLEAR, BLACK, WHITE, MATTE SATIN	MAC FLICK STICK 1.5M
CLEAR	MAC FLICK STICK 1.8M
WHITE	MAC FLICK STICK FIBREGLASS 2M

**FLICK STICK GUIDE**

OPENING	CURTAIN PIECE QTY	FLICK STICK QTY
ONE WAY STACK	1	1
CENTRE OPEN	2	2
OFFSET CENTRE OPEN	2	2
OFFSET FREE FLOW	2	4
ONE WAY FREE FLOW	1	2
TWO PIECE FREE FLOW	2	4

*(For all other curtain quantity splits, please advise openings when ordering for correct flick stick requirement)*





## ADDITIONS & **SPECIAL REQUIREMENTS**

Orders will be manufactured to suit the width of the opening as a finished size. All measurements are required to be submitted in millimetres.

### **ANGLE BEND TRACKS**

Orders submitted are required to state the back wall measurements or finished (make) size only; deductions and allowances will be made accordingly. If the curtain will be sitting in front of another window furnishing, please advise the projection of the back wall measurement required. To ensure you are supplying correct measurement details for your order request, please see the Measuring & Template Guide.

### **CONTINUOUS BEND TRACK**

Orders submitted are required to state the back wall measurements or finished (make) size only, submitted with a 'to scale' template to replicate the window or an accurate measurement of the radius. To ensure you are supplying the correct measurement details for your order request, please see the Measuring & Template Guide.

### **JOINS**

Tracks can be supplied in a continuous length no greater than 5.8M. Depending on your area of location and accessibility, you may request the track to be split. All splits of track lengths will be supplied in equal halves if measurements of split requirements are not specified on the order form.

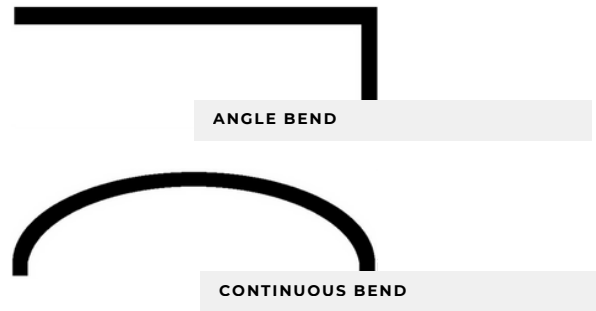
FIT YOUR SPACE

## BENDING GUIDE

MAC offers two bending options:

- **Angle Bend**
- **Continuous Bend**

The below MAC Tracks are available in the bending options:



BENDING OPTIONS		
TRACK TYPE	ANGLE BEND	CONTINUOUS
MAC STANDARD TRACK	✓	✓
MAC D10	✓	✓
MAC D15	x	x
MAC D25	✓	✓
MAC D38	x	x
SOMFY GLYDEA	✓	✓

When submitting an order for a track bend, please ensure you are supplying a detailed diagram drawing of an angle bend that reflects all measurements required.

All diagrams received will need to include the degrees for the bends required.

For a continuous bend, a 'to scale' template of the track shape and length is delivered to MAC to replicate what is required for the application.

The MAC Team will review the template received prior to commencing manufacturing, this will ensure the application can be replicated.





QUICK GUIDES

**CORNER WINDOWS, BAY  
WINDOWS & BRACKETS**

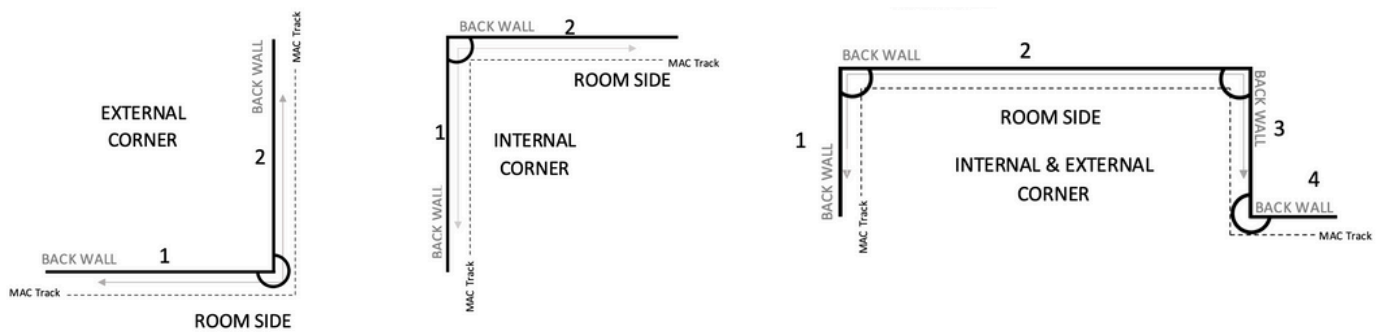
## INFORMATION FOR YOU & YOUR CLIENTS

### BRACKET GUIDE

All tracks included in the Made to Measure pricing are supplied with brackets at a standard spacing of every 600mm. This ensuring consistent structural support and reliable performance. This spacing has been carefully selected to maintain track stability, prevent sagging and support smooth, even operation of your curtain system across the full span. Additional brackets may be required for heavier applications or specific installation requirements.

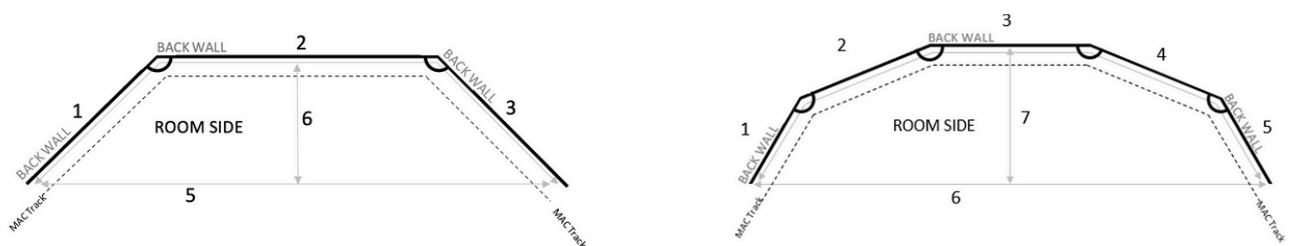
### CORNER WINDOWS

Measurements should always be taken as back wall or make size, left to right in any area for track calculations. Numbered areas are where measurements are required in each example diagram. If providing make size measurements, you are required to take your own deductions.



### BAY WINDOWS

Measurements should always be taken from the back wall or make size, left to right in any area for track calculations. Numbered areas are where measurements are required, which include the internal room measurement displayed in the example diagrams. If providing make size measurements, you are required to take your own deductions.



THE MAC RANGE  
**AUTOMATION**

somfy®

GLYDEA MOTORISATION

## EFFORTLESS ELEGANCE WITH SOMFY GLYDEA™

somfy®

Bring a new level of luxury, convenience, and quiet performance to spaces with Somfy Glydea™—the intelligent motorisation system trusted by architects, interior designers, and homeowners worldwide.

Designed for silence and built for smooth, seamless curtain movement, Glydea offers a discreet and reliable solution for premium residential and commercial interiors.

This brochure gives you a clear breakdown of Glydea motor pricing, system options, and features, so you can choose the ideal setup for your project. Whether you're automating a single window or outfitting an entire home, hotel, office space or venue, Somfy Glydea blends technology with style to deliver smart shading—without compromise.

COMPATIBLE WITH:





THE MAC RANGE

**PRODUCT SPECIFICATIONS**

MAC TRACKS

# MAC STANDARD

## TRACK DETAILS

MAXIMUM TRACK LENGTH

6 METRES

TRACK COLOUR

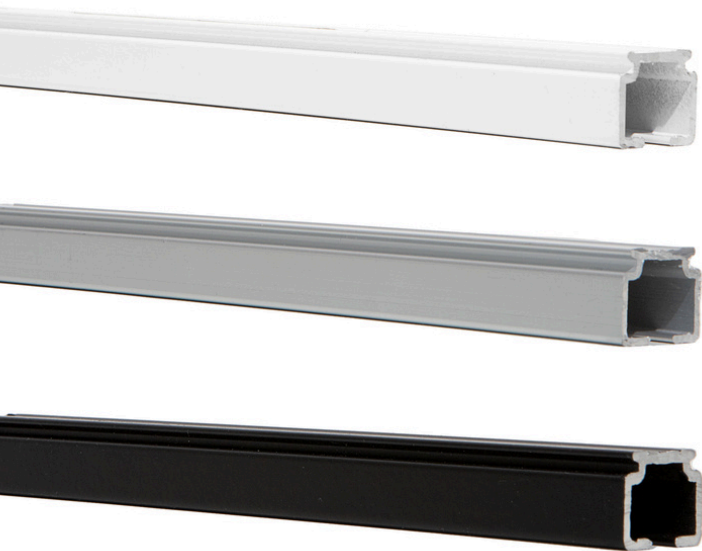
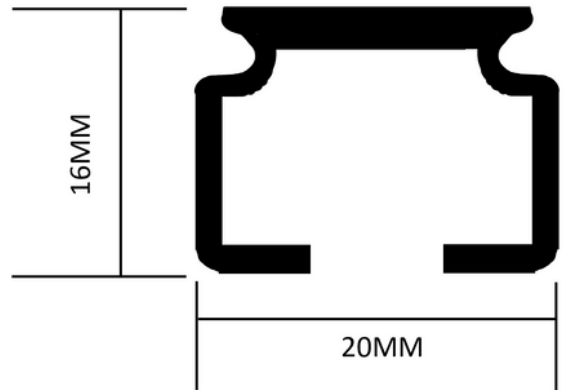
WHITE / MATTE SATIN / MATTE BLACK

HEADING TYPES

ALL HEADING TYPES

TRACK PROFILE

HEIGHT OF EXTRUSION 16MM  
WIDTH OF EXTRUSION 20MM



# MAC STANDARD

**NO CAMLOCK TOP FIX BRACKET**  
WHITE/BLACK



**TOP FIX CAMLOCK BRACKET**  
WHITE/ MATTE SATIN / BLACK



**SINGLE FACE FIX BRACKET**  
WHITE/ MATTE SATIN/ BLACK



**DOUBLE FACE FIX BRACKET**  
WHITE/ MATTE SATIN/ BLACK



# MAC STANDARD

**SINGLE & DOUBLE FIX BRACKET COVER**  
BLACK / WHITE / GREY



**PLEATED HEADING RUNNERS**  
WHITE / BLACK



**S-FOLD 120% & 100% & 80%**  
WHITE / BLACK

**WAVE FOLD**  
WHITE / BLACK



**END CAPS**  
WHITE / BLACK / GREY





MAC TRACKS

# MAC D10

**TRACK DETAILS**

MAXIMUM TRACK LENGTH

6 METRES

TRACK COLOUR

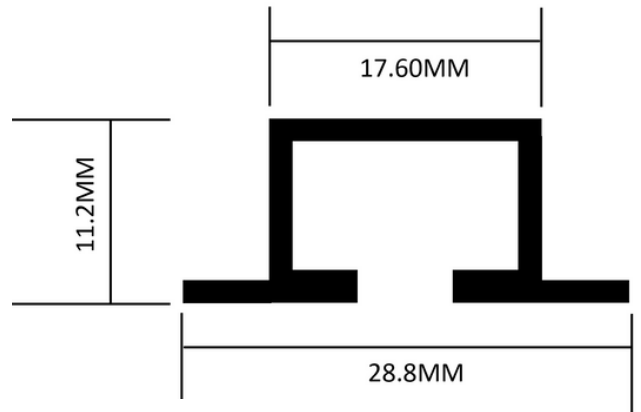
WHITE

HEADING TYPES

ALL HEADING TYPES

TRACK PROFILE

HEIGHT OF EXTRUSION 11.2MM  
WIDTH OF EXTRUSION 28.8MM



MAC TRACKS

# MAC D10

**PLEATED HEADING RUNNERS**  
WHITE / BLACK



**S-FOLD 120% & 100% & 80%**  
WHITE / BLACK



**WAVE FOLD**  
WHITE / BLACK



MAC TRACKS

# MAC D15

**TRACK DETAILS**

MAXIMUM TRACK LENGTH

6 METRES

TRACK COLOUR

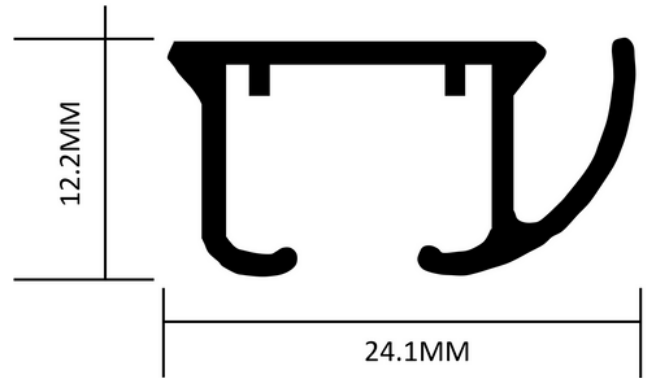
WHITE / MATTE BLACK

HEADING TYPES

ALL HEADING TYPES

TRACK PROFILE

HEIGHT OF EXTRUSION 12.2MM  
WIDTH OF EXTRUSION 24.1MM



MAC TRACKS

# MAC D15

## TOP FIX BRACKET

WHITE / BLACK



## SINGLE FACE FIX BRACKET

WHITE / BLACK



## DOUBLE FACE FIX BRACKET

WHITE / BLACK



MAC TRACKS

# MAC D15

**PLEATED HEADING RUNNERS**  
WHITE / BLACK



**S-FOLD 120% & 100% & 80%**  
WHITE / BLACK



**WAVE FOLD**  
WHITE / BLACK



**END CAPS**  
WHITE / BLACK





MAC TRACKS

## MAC D25

### TRACK DETAILS

MAXIMUM TRACK LENGTH

6 METRES

TRACK COLOUR

WHITE / MATTE SATIN / MATTE BLACK

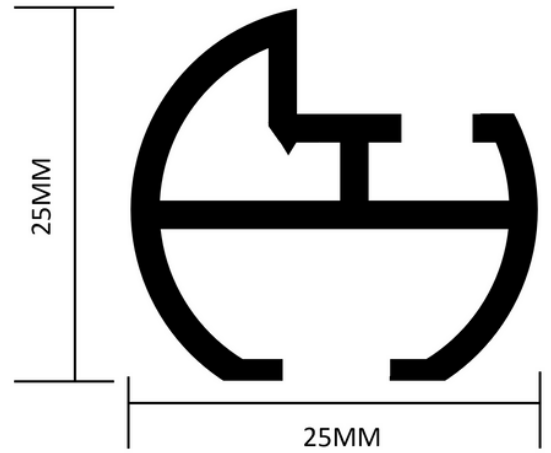
(ALSO AVAILABLE IN ANTIQUE BRASS, BIRCH, CHROME, GOLD ON REQUEST)

HEADING TYPES

ALL HEADING TYPES

TRACK PROFILE

HEIGHT OF EXTRUSION 12.2MM  
WIDTH OF EXTRUSION 24.1MM



MAC TRACKS

# MAC D25

## TOP FIX BRACKET

WHITE/ MATTE SATIN / BLACK



## SINGLE FACE FIX BRACKET

WHITE/ MATTE SATIN / BLACK



## DOUBLE FACE FIX BRACKET

WHITE/ MATTE SATIN / BLACK



MAC TRACKS

# MAC D25

**SINGLE & DOUBLE FIX BRACKET COVER**  
BLACK/ WHITE/ GREY



**PLEATED HEADING RUNNERS**  
WHITE / BLACK



**S-FOLD 120% & 100% & 80%**  
WHITE / BLACK

**WAVE FOLD**  
WHITE / BLACK



**END CAPS**  
WHITE / BLACK / GREY





MAC TRACKS

## MAC D38

### TRACK DETAILS

MAXIMUM TRACK LENGTH

6 METRES

TRACK COLOUR

WHITE / MATTE SATIN / MATTE BLACK

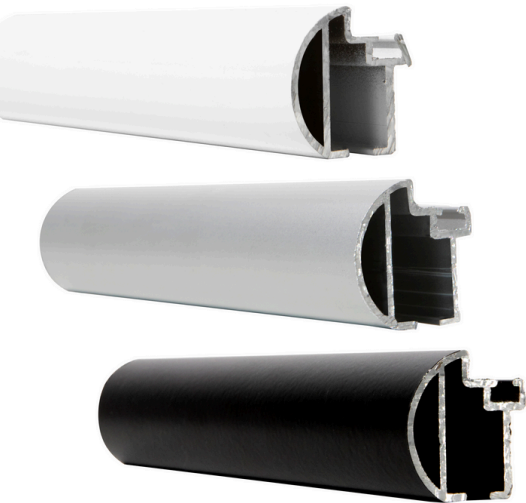
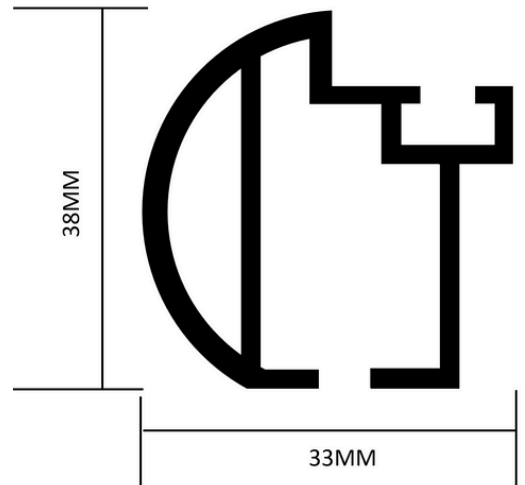
(ALSO AVAILABLE IN ANTIQUE BRASS, BIRCH, CHROME, GOLD ON REQUEST)

HEADING TYPES

ALL HEADING TYPES

TRACK PROFILE

HEIGHT OF EXTRUSION 12.2MM  
WIDTH OF EXTRUSION 24.1MM



MAC TRACKS

# MAC D38

## TOP FIX BRACKET

WHITE/ MATTE SATIN / BLACK



## SINGLE FACE FIX BRACKET

WHITE/ MATTE SATIN / BLACK



## DOUBLE FACE FIX BRACKET

WHITE/ MATTE SATIN / BLACK



MAC TRACKS

# MAC D38

**SINGLE & DOUBLE FIX BRACKET COVER**  
BLACK/ WHITE/ GREY



**PLEATED HEADING RUNNERS**  
WHITE / BLACK



**S-FOLD 120% & 100% & 80%**  
WHITE / BLACK

**WAVE FOLD**  
WHITE / BLACK



**END CAPS**  
WHITE / BLACK / GREY





OUR PARTNERS

WE WORK WITH THE VERY BEST

somfy®

James Dunlop

WARWICK

Ozepel

M O K U M

 basfordbrands

Stilling  
SINCE 1949

Hoad

 NETTEX  
INTERIOR TEXTILES

CONTACT US NOW TO FIND YOUR CLOSEST  
MAC SPECIALIST

**MAC**

D E S I G N G R O U P

P: 1300 113 261

A: 29 WURUNDJERI DRIVE, EPPING VIC 3076

E: INFO@MACDG.COM.AU



macdesigngroup.com.au  
macwindowfashions.com.au